



### 311SM6-T



*Actual product appearance may vary.*

**SM Series Subminiature Basic Switch, Single Pole Double Throw (SPDT), 250 Vac, 5 A, Roller Lever Actuator, Solder Termination**

#### Features

- Long operating life
- Elongated mounting hole for easier, more accurate mounting
- Choice of actuation (plunger, as well as a variety of integral and auxiliary actuators)
- Choice of electrical termination (solder, quick connect, PCB)
- Choice of operating characteristics (sensitive differential travel as low as 0,0254 mm [0.001 in] maximum, low operating force to 0,56 N [2.0 oz] maximum)
- Optional series constructions available (gold contacts for low energy switching, bifurcated gold contacts for maximum reliability, power load switching capability to 11 A)
- MIL-PFR-8805 qualified listings available

#### Description

MICRO SWITCH™ SM Series subminiature basic switches are used for simple or precision on/off application needs. The MICRO SWITCH™ SM Series switches are slightly larger than the MICRO SWITCH™ SX Series switches. These switches combine small size and light weight with ample electrical capacity, precision operation and long life.

#### Potential Applications

- Aerospace
- Instrumentation
- Appliances
- Vending machines
- Timing devices
- Office equipment
- Computer/business equipment
- Test instruments
- Medical/dental equipment
- Communications equipment
- HVAC equipment
- Manually operated devices
- Valves

Product Specifications	
Switch Type	MICRO SWITCH™ Subminiature 12,7 mm H x 6,35 mm W x 20,3 mm L [0.5 in H x 0.25 in W x 0.8 in L]
Sealed	No
Ampere Rating	5 A
Circuitry	Single Pole Double Throw (SPDT)
Actuator	Roller Lever
Termination	Solder
Operating Temperature Range	-55 °C to 125 °C [-67 °F to 257 °F]
Voltage	250 Vac
Approvals	CE,CSA,UL,ENEC
Actuator Length	6,38 mm [0.251 in]
Contact Type	Silver
Operating Force (O.F.)	0,39 N [1.4 oz] max.
Release Force (R.F.)	0,07 N [0.25 oz] max.
Pretravel (P.T.)	2,16 mm [0.085 in] max.
Overtravel (O.T.)	0,46 mm [0.018 in] min.
Differential Travel (D.T.)	0,48 mm [0.019 in] max.
Operating Position (O.P.)	14,2 mm ± 1,5 mm [0.560 in ± 0.060 in]
Housing Material	General Purpose Phenolic
High Temperature	204 °C [400 °F]
CE mark	61058-1
UL File #	E12252
CSA File #	LR41372
Agency Approvals and Standards	1054
Mounting Centers	9,65 mm [0.38 in]
Maximum Tightening Torque	0,26 N m [2.3 in lb]
Weight	2,72 g [0.006 lb]
Package Height	12,4 mm [0.49 in]
Package Width	6,35 mm [0.25 in]
Package Length	19,8 mm [0.78 in]
Availability	Global
UNSPSC Code	30211905
UNSPSC Commodity	30211905 Snap switches
Series Name	SM

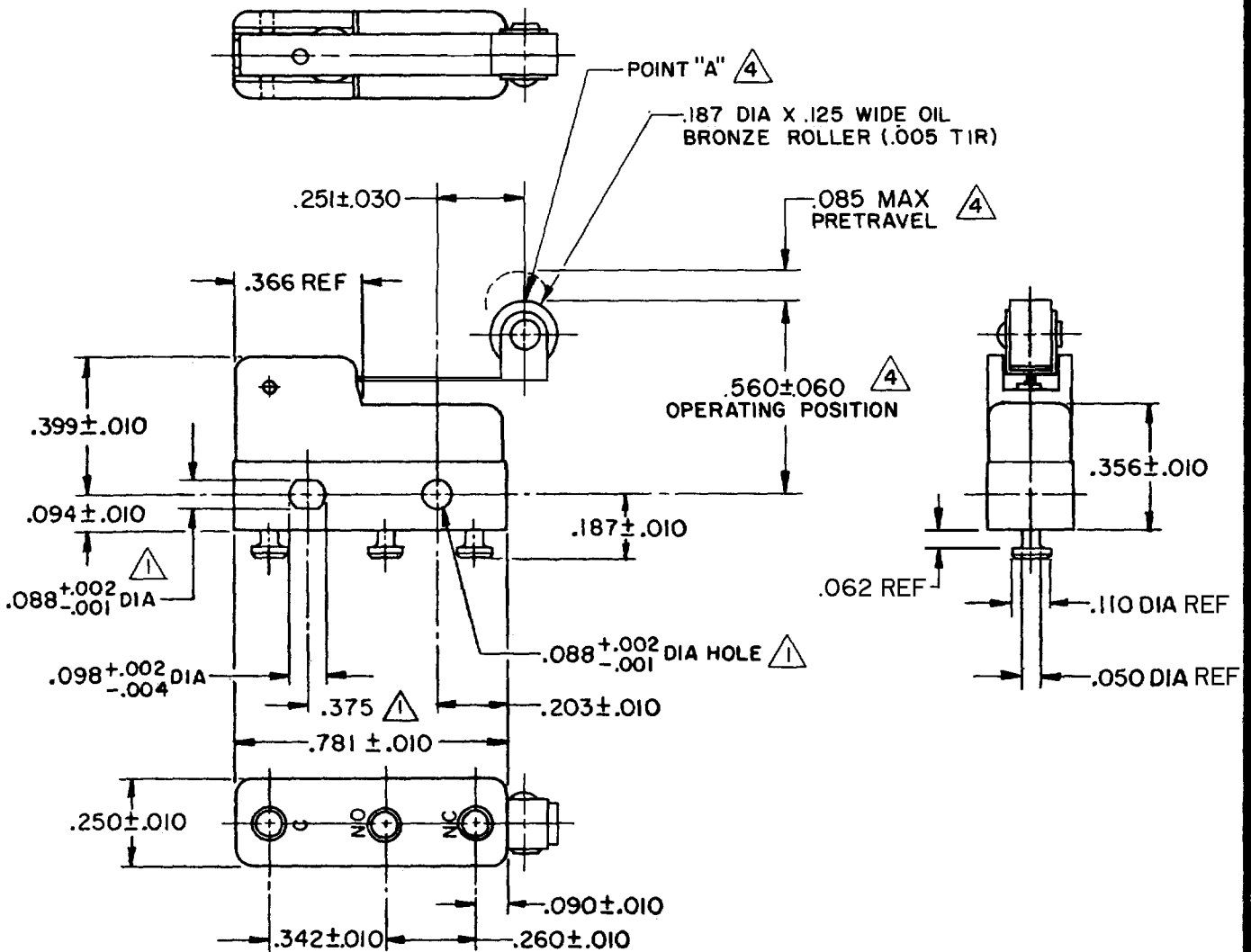
# MICRO SWITCH

FREEPORT ILLINOIS, U.S.A  
A DIVISION OF HONEYWELL  
FED. CODE CODE 91929

# SWITCH-BASIC

CATALOG LISTING  
**311SM6-T**

DRAWING NUMBER: **311SM6-T**  
 PAGE 1 OF 1  
 ISSUE: **M**  
 CHECK: **5**  
 REVISIONS:  
 A 00-31079 S R H 27 SEP 72  
 B CO-77768 S A D 12 JUL 94  
 C CO-95172 J J A 21 JUNE 99  
 D 202140 CSL 7 FEB 01  
 RELEASE NO. SR11750  
 REPLACES SR11750  
 RASTER DRAWN FO-52898  
 SR H 27 SEP 72 CHECK US D 29 SEP 72



**NOTE-**

- $\triangle$  MOUNTING HOLES WILL ACCEPT PINS OR SCREWS OF .087 MAX DIA ON .375  $\pm$  .002 CENTERS
- 2- SWITCH WILL WITHSTAND TEMPERATURE OF 250°F
- 3- TERMINALS ARE PLATED FOR SOLDERING
- $\triangle$  CHARACTERISTICS TAKEN AT POINT "A"

THIS DRAWING COVERS A PROPRIETARY ITEM AND IS THE PROPERTY OF MICRO SWITCH, A DIVISION OF HONEYWELL. THIS DRAWING IS NOT TO BE COPIED OR USED WITHOUT THE APPROVAL OF MICRO SWITCH.

CHARACTERISTICS $\triangle$	ELECTRICAL DATA	SCALE 2 TO 1
OPERATING FORCE ----- 40 GRAM MAX	CONTACT ARRANGEMENT S P D T	DO NOT SCALE PRINT
RELEASE FORCE ----- 7 GRAM MIN	30 VOLTS DC RATING INDUCTIVE ----- SEA LEVEL --- 3 AMP 50,000 FT --- 2.5 AMP RESISTIVE ----- SEA LEVEL --- 5 AMP 50,000 FT --- 5 AMP MAXIMUM INRUSH ----- 24 AMP	UNLESS OTHERWISE NOTED DIMENSIONS ARE IN INCHES <b>TOLERANCES ARE</b>
DIFFERENTIAL TRAVEL ----- .019 MAX		ONE PLACE (.0) $\pm$ .030 TWO PLACE (.00) $\pm$ .015 THREE PLACE (.000) $\pm$ .005 ANGLES $\pm$
OVERTRAVEL ----- .018 MIN	SA 250 VAC $\sim$ <b>RLC</b>	WEIGHT .006 LB MAX